



R&D Laboratories

Mahiuddin Ahmed, PhD

Chief Scientific Officer

December 11, 2019



Disclaimer

This presentation contains forward-looking statements within the meaning of the US Private Securities Litigation Reform Act of 1995. The forward looking statements involve substantial risks and uncertainties. All statements, other than statements of historical facts, contained in this presentation, including statements regarding our strategy, future operations, future financial position, future revenue, projected costs, prospects, plans and objectives of management and expected market growth are forward-looking statements. The words “anticipate,” “believe,” “continue,” “could,” “estimate,” “expect,” “intend,” “may,” “might,” “plan,” “potential,” “predict,” “project,” “should,” “target,” “would” and similar expressions are intended to identify forward-looking statements, although not all forward-looking statements contain these identifying words. Such statements include, but are not limited to, statements about regulatory approvals, clinical trial timing and plans, the achievement of clinical and commercial milestones, future financial and operating results, business strategies, market opportunities, financing, and other statements that are not historical facts. Our product candidates and related technologies are novel approaches to cancer treatment that present significant challenges. Actual results may differ materially from those indicated by such forward-looking statements as a result of various factors, including but not limited to: risks associated with the Company's development work, including any delays or changes to the timing, cost and success of our product development activities and clinical trials including if we encounter difficulties enrolling patients in our clinical trials; the risks of delays in FDA and/or EU approval of our drug candidates or failure to receive approval; the risks related to commercializing any approved new pharmaceutical product including the rate and degree of market acceptance of our product candidates; development of our sales and marketing capabilities and risks associated with failure to obtain sufficient reimbursement for our products; our inability to enter into collaboration or alliances with partners; risks associated with protection of our intellectual property rights; and other risks and uncertainties affecting the Company including those described in the "Risk Factors" section included in the Company's Registration Statement on Form S-1 declared effective by the SEC on 20 September, 2018 and in the Company's other SEC filings. Any forward-looking statements contained in this presentation speak only as of the date hereof, and the Company undertakes no obligation to update any forward-looking statement, whether as a result of new information, future events or otherwise.

This presentation includes statistical and other industry and market data that we obtained from industry publications and research, surveys and studies conducted by third parties or us. Industry publications and third-party research, surveys and studies generally indicate that their information has been obtained from sources believed to be reliable, although they do not guarantee the accuracy or completeness of such information. All of the market data used in this presentation involves a number of assumptions and limitations, and you are cautioned not to give undue weight to such estimates. While we believe these industry publications and third-party research, surveys and studies are reliable, we have not independently verified such data. The industry in which we operate is subject to a high degree of uncertainty, change and risk due to a variety of factors, which could cause results to differ materially from those expressed in the estimates made by the independent parties and by us.

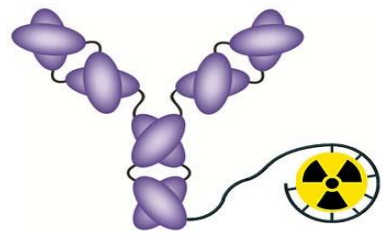
“For a cancer that was once incurable, a cure is definitely within reach today.”



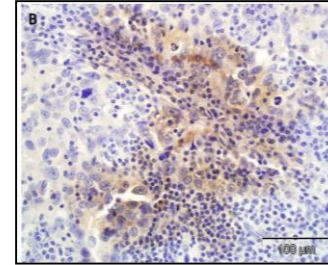
Y-mAbs R&D Laboratories: Continuing the legacy of creative innovation for pediatric cancer



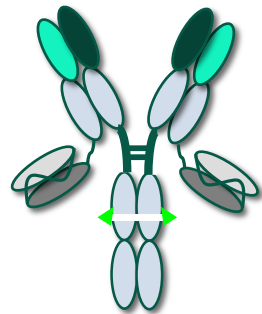
R&D and Translation: Complete Approach to Cancer Treatment



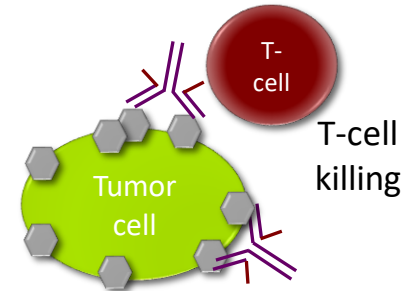
Patient Selection



Companion Diagnostic



Treatment



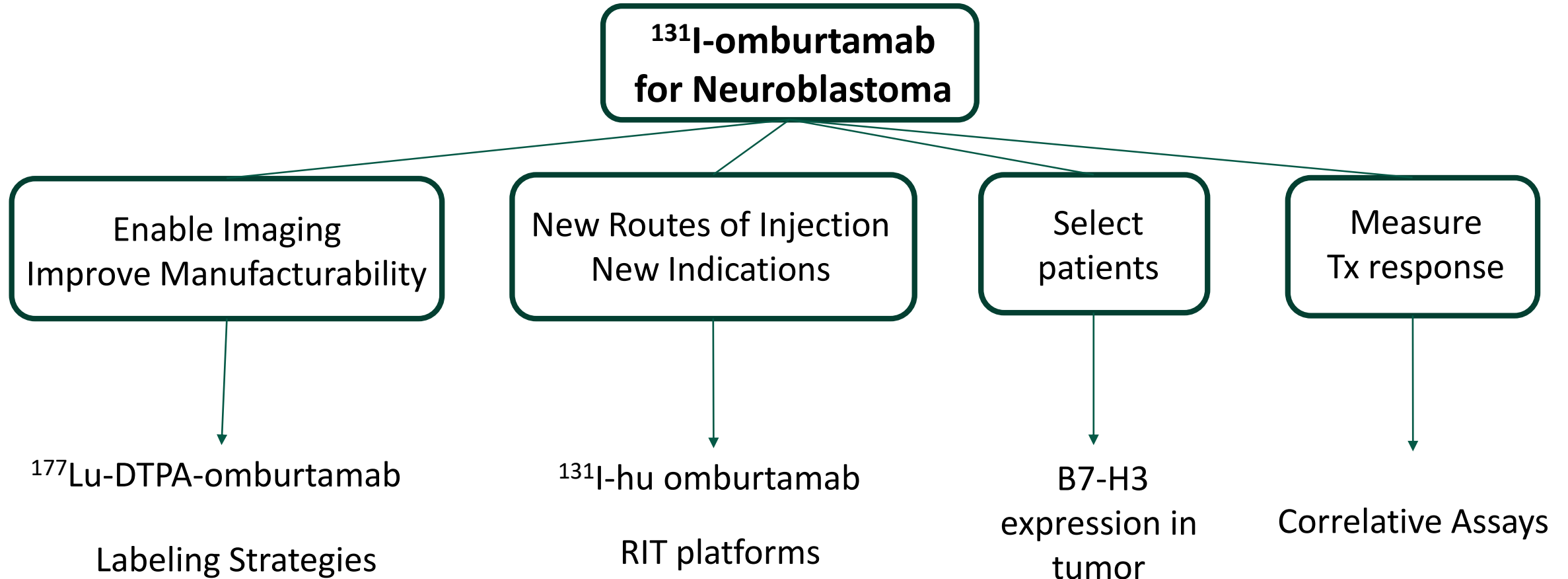
Immunotherapy

Response to Treatment



Theranostic

B7-H3 Program



B7-H3 is expressed on numerous pediatric and adult solid tumors

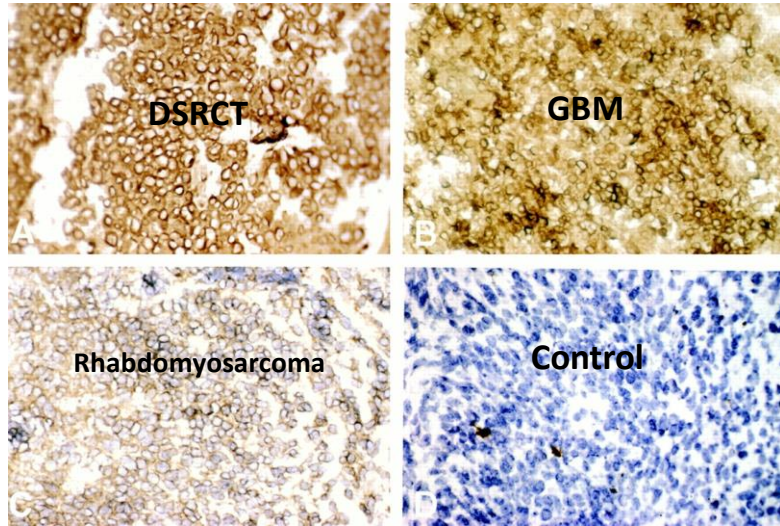


Table 1 *8H9 reactivity: Neuroectodermal tumors*

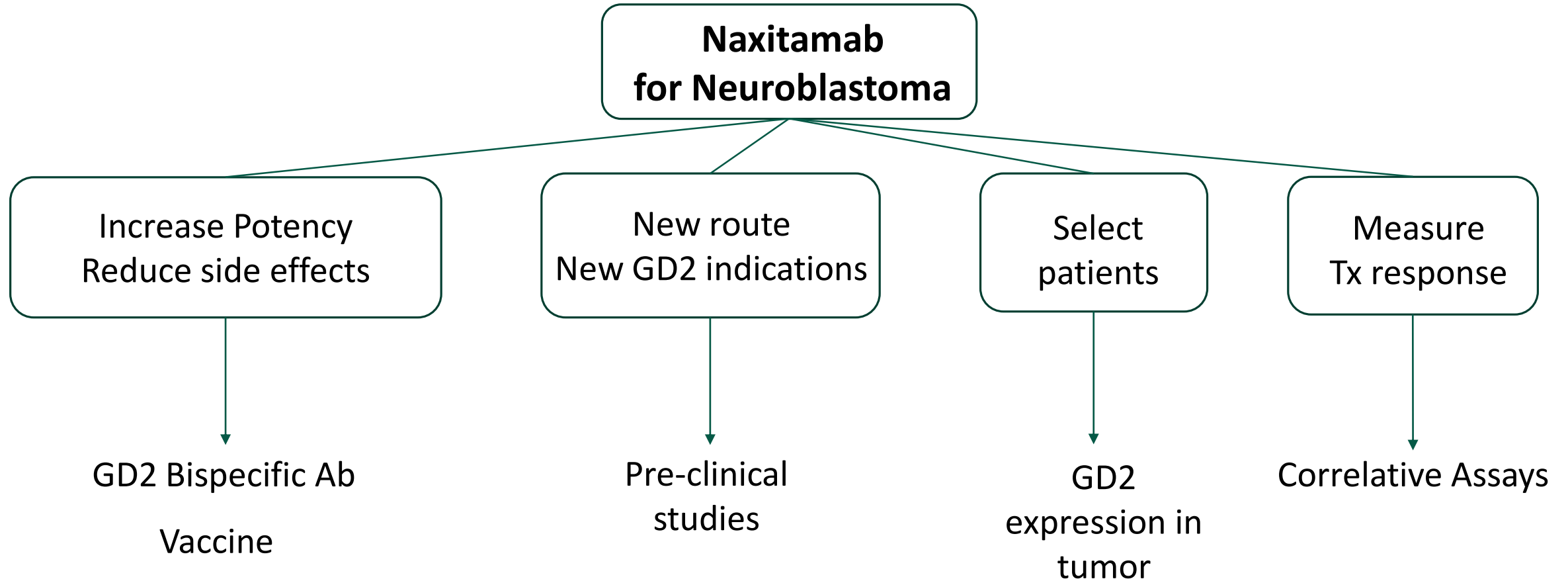
Tumors	No.	8H9 positive	%
Neuroblastoma	90	87	97
Brain tumors			
Gliial tumors			
Glioblastoma multiforme	17	15	88
Mixed glioma	4	3	
Oligodendroglioma	11	4	36
Astrocytoma	8	6	75
Ependymoma	3	2	
Primitive PNET			
Medulloblastoma	2	2	
Mixed			
Neuronogial tumor	2	1	
Other			
Schwannoma	3	3	
Meningioma	2	2	
Neurofibroma	1	1	
Pineoblastoma	1	1	
Melanoma	16	12	75
Ewing's family of tumors	21	21	100
Total	181	160	88

Table 2 *8H9 reactivity: Mesenchymal, epithelial and other tumors*

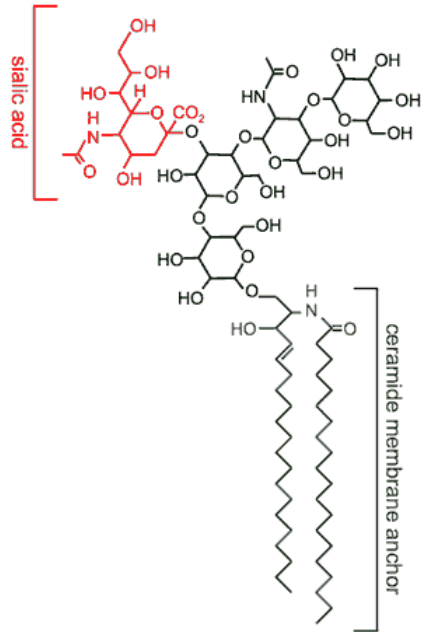
Tumors	No.	8H9 reactive	%
A. Mesenchymal			
Rhabdomyosarcoma	29	28	97
Osteosarcoma	29	28	97
Desmoplastic small round cell tumor	37	35	95
Leiomyosarcoma	4	4	
Synovial sarcoma	3	2	
Malignant fibrous histiocytoma	1	1	
Undifferentiated sarcoma	2	2	
Fibrosarcoma	1	0	
Total	106	100	94
B. Epithelial			
Breast	12	4	33
Bladder	4	1	
Adrenal	3	1	
Stomach	1	1	
Prostate	2	1	
Colon	1	1	
Lung	1	1	
Endometrium	1	1	
Cervix	1	0	
Renal	1	1	
Total	27	12	44
C. Other tumors			
Hepatoblastoma	4	3	
Wilms' tumor	8	7	
Rhabdoid tumor	3	3	
Paraganglioma	1	1	
Total	16	14	88

Modak et al. CANCER RESEARCH 61, 4048–4054, May 15, 2001

GD2 Program



GD2 is highly expressed in neuroblastoma and several other tumors



vaccine

Type of tumor	GM3	GM2	GM1	GD3	GD2	9-O-Ac-GD3	9-O-Ac-GD2	5-N-de-GM3	Neu5Gc-GM3	Fucosyl-GM1	Reference
Melanoma	++	+		++++	+++	+	+	++ ^d	++		Morton and Barth (39), Pukel et al. (40), Ravindranath et al. (41)
Neuroblastoma		++		+	++++	+					Cheung et al. (42), Hettmer et al. (43), Kohla et al. (44)
Glioma				++	++++						Mujoo et al. (35)
SCLC ^a		++	++	++	+++					+++	Brezicka et al. (45), Yoshida et al. (46, 47)
Non-SCLC	+++								+++		van Crujisen et al. (48)
T-ALL ^b		+++		++	+						Okada et al. (49), Yamashiro et al. (50)
ATL ^c				++	++						Okada et al. (49),

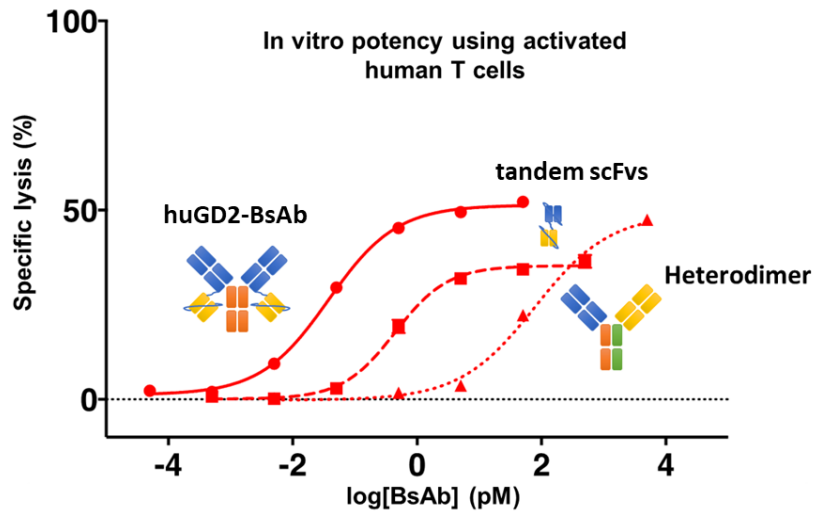
Adapted from Daniotti et al. *Front. Oncol.*, 19 December 2013 | <https://doi.org/10.3389/fonc.2013.00306>

Breast cancer: 37/63 (59%) of patient tumor samples were +/++ for GD2 by IHC, including 27/40 (67%) of Triple Negative Breast Cancer

Orsi et al. *Oncotarget*. 2017 May 9; 8(19): 31592–31600.

GD2 Bispecific Antibody has best in class potency, manufacturability and safety properties

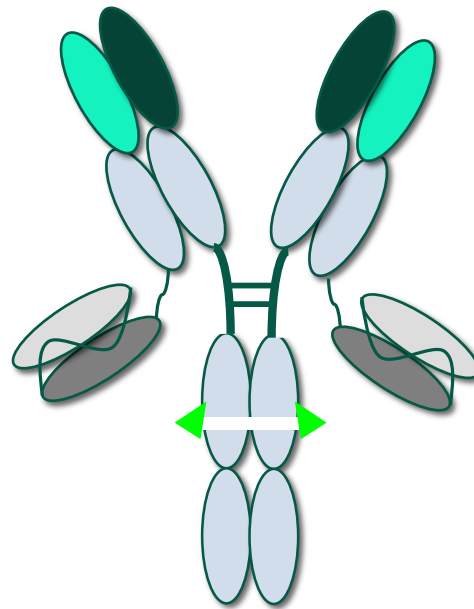
Higher potency than other formats



Adapted from Santich BH et al. Adv Neuroblastoma Res 2018

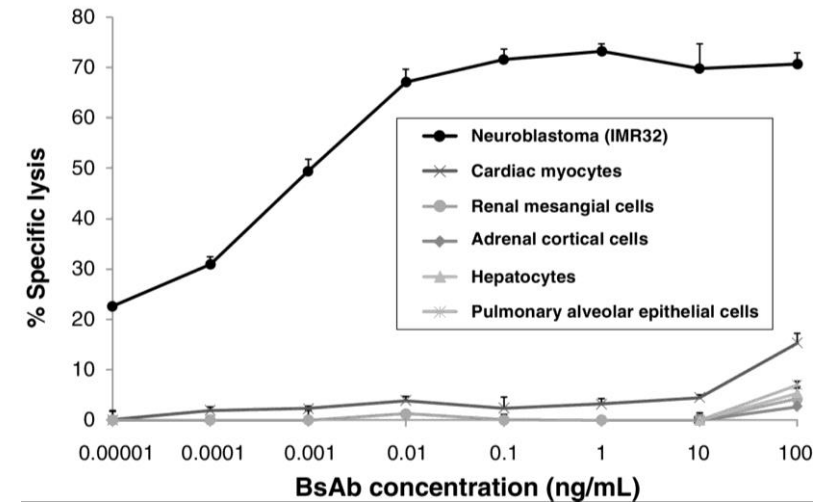
BsAb (BiClone)

200 kDa



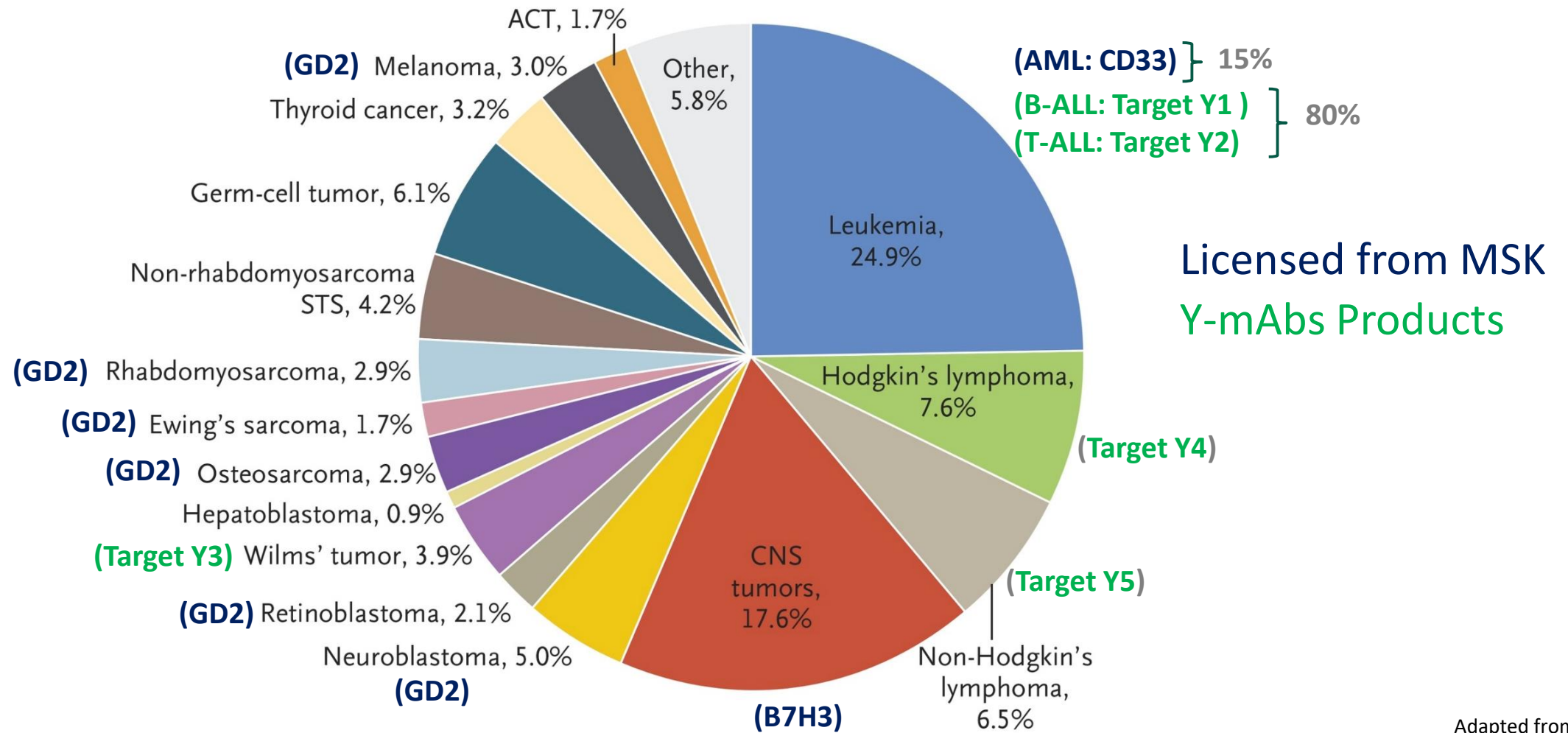
Binds tumor and CD3 to engage T cells, has silent Fc (no ADCC or CMC)

Wide safety margin for normal tissues



Hong Xu et al. Cancer Immunol Res 2015;3:266-277

Covering the landscape of pediatric cancer



Adapted from SEER data
N Engl J Med 2015; 373:2336-2346

The background features a complex, microscopic scene. On the left, a large, textured green structure, possibly a cell or a microorganism, is partially visible. Scattered throughout the scene are various blue and purple structures, some resembling flagella or other cellular components. The overall lighting is dim, with a focus on the central text.

THANK YOU